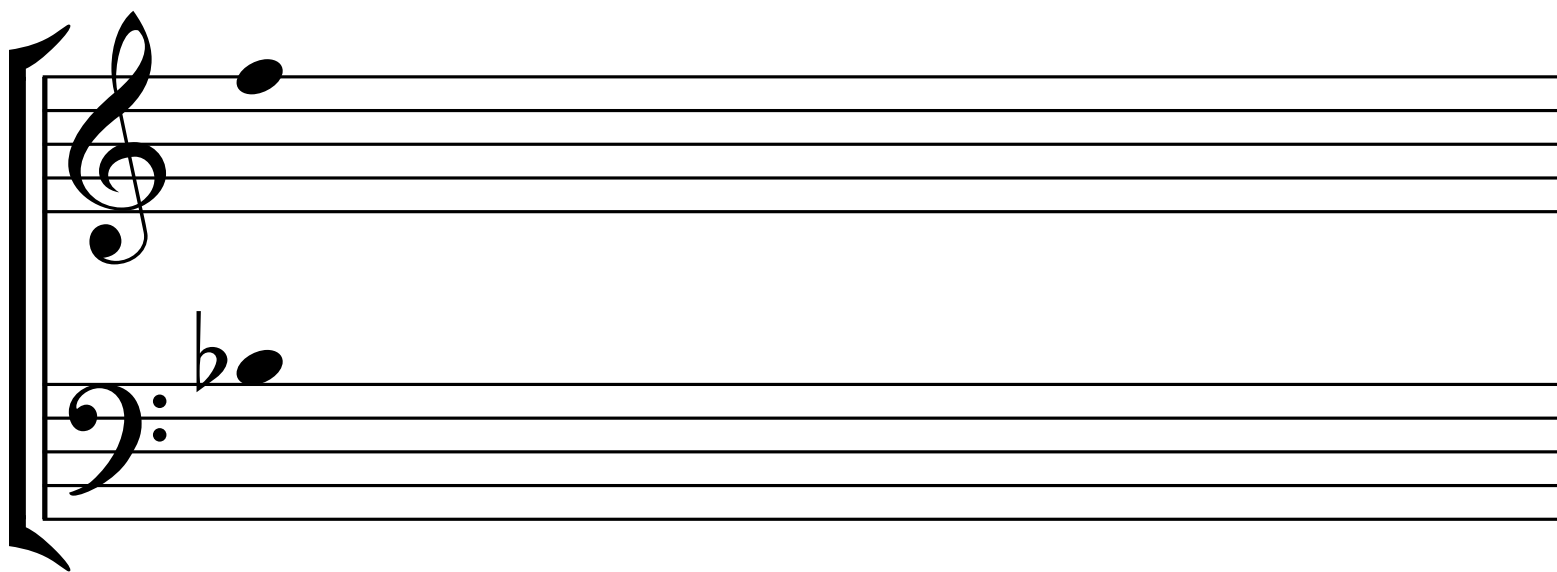


Vocal Placement

Treble



Cambiata I

2

The image shows a musical score for a piece titled "Cambiata I". It consists of two staves. The top staff uses a treble clef and contains a single note on the second line (G4). The bottom staff uses a bass clef and contains a single note on the second line (G3). A large bracket on the left side of the staves is labeled with the number "2", indicating a second ending or a specific fingering. The notes are represented by solid black dots.

Cambiata II

Musical notation for Cambiata II, consisting of two staves (treble and bass) connected by a brace on the left. The treble staff contains a treble clef and a single note on the second line. The bass staff contains a bass clef, a double bar line, and a single note on the second space. A fermata is positioned at the end of the bass staff, and the number 3 is written at the end of the treble staff.

Baritone

A musical staff consisting of two staves. The top staff has a treble clef and the bottom staff has a bass clef. A large bracket on the left side of the staves is labeled with the number '4', indicating a four-measure rest. In the first measure, there are two notes: a quarter note on the second line of the treble clef (G4) and a quarter note on the second space of the bass clef (F3).